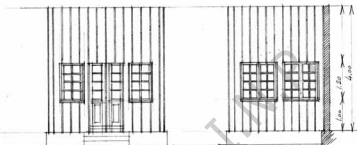
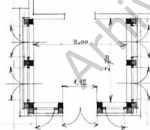


BIS, DE LEMN S^{TI} VOEVOZI DIN VOVRIESTI - JUD. ROMAN



FATADA PRINCIPALA

FATADA LATERALA



PLANUL

PROIECT PENTRU PRIDVORUL
CU GIAMLAC IN JURUL CEEI
EXISTENT

SCARA 0M02 = 1METRU

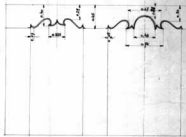
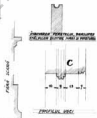
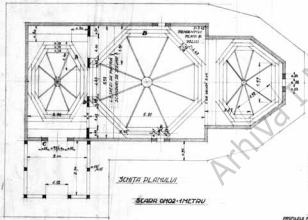
Comisia Monumentelor Istoriale
TEHNICUL - Nr. 356



1938

BIS DE LEMNI S^{TA} VOEVOZI DIN VOVRIESTI JUD ROMANIA

Suprastructura parca: sup. scara
 bolti 24, 50



PROFILUL PASII

